

pixxel

SEEING THE UNSEEN

EXISTING CONSTELLATIONS ARE BLIND

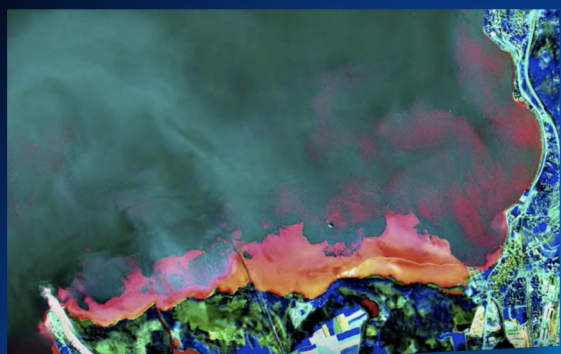
TO PRESSING GLOBAL PROBLEMS

WHAT'S SEEN TODAY

Basic water bodies

\$4 Billion Lost

in the US due to water pollution



WHAT'S NEEDED

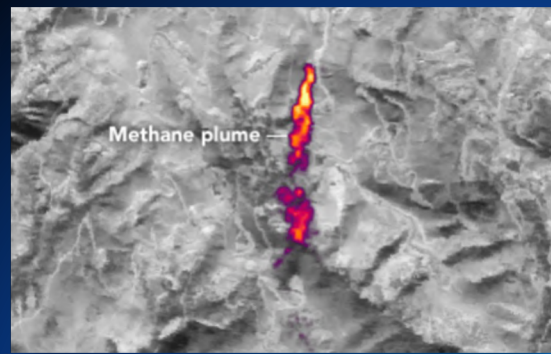
Concentration maps
of harmful chemicals

WHAT'S SEEN TODAY

Basic pipeline maps

\$30 Billion Lost

From US oil & gas industry leaks



WHAT'S NEEDED

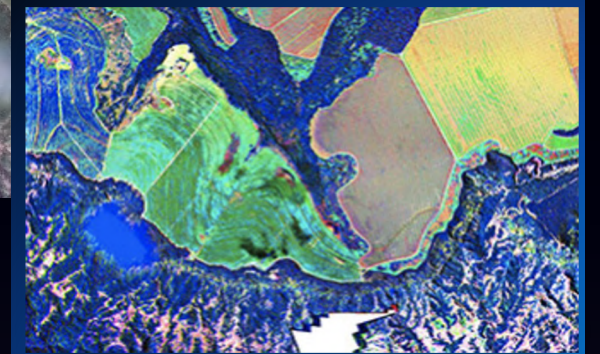
Quantified oil
and gas leaks

WHAT'S SEEN TODAY

Basic crop health

\$540 Billion Lost

annually in destroyed global crops



WHAT'S NEEDED

Detailed pest and
disease maps

WE NEED A BETTER CLASS OF SATELLITES

THE SOLUTION?

THE WORLD'S FIRST HYPERSPPECTRAL CONSTELLATION



**WIDELY
ACCESSIBLE**

Lowest pricing
in the market



**DAILY
REVISIT**

Image the world
every 24 hours



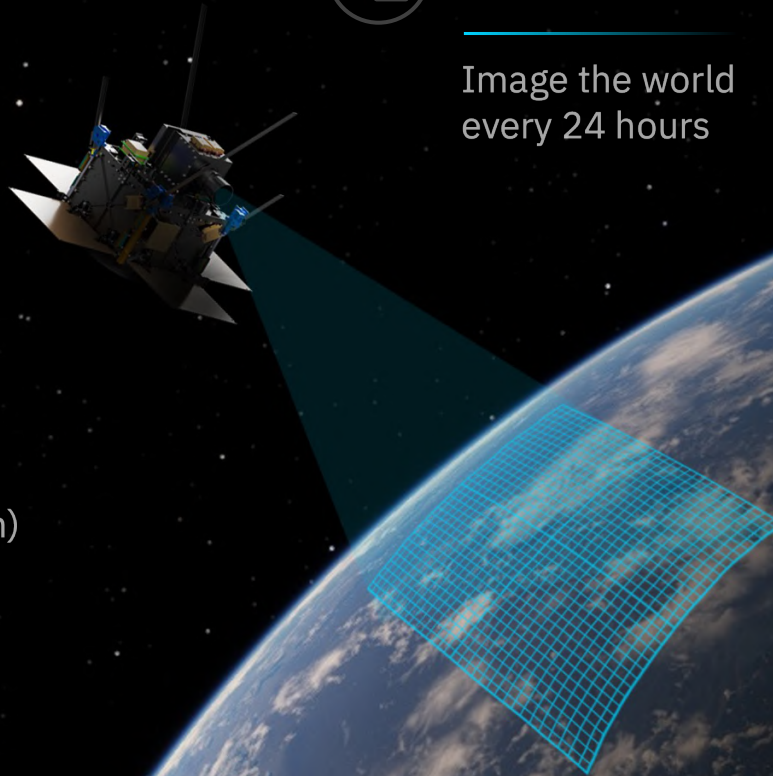
**UNPRECEDENTED
RESOLUTION**

5M; Upto 250 bands
(50x more information)



**GLOBAL
ACCESS**

Access to any part
of the planet



50× MORE INFORMATION

THAN OTHER TYPES OF IMAGERY



Hyperspectral

Hyperspectral is information in **100s of wavelengths** or bands, going beyond the visible spectrum into infrared.



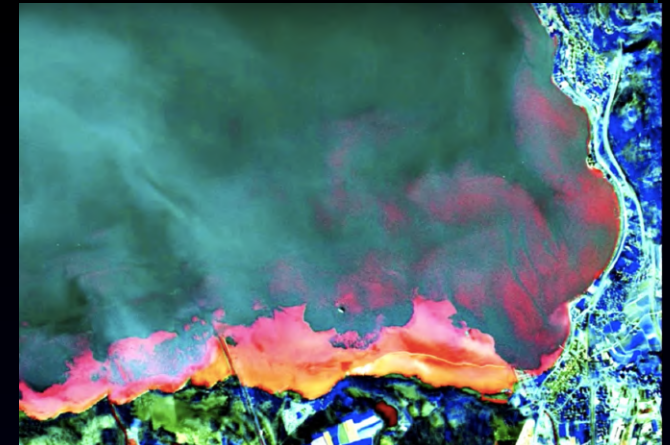
Multispectral

Multispectral is information in **10-20 wavelengths** or bands across the visible and infrared range.



RGB

RGB is information in **three broad visible wavelengths** or bands.



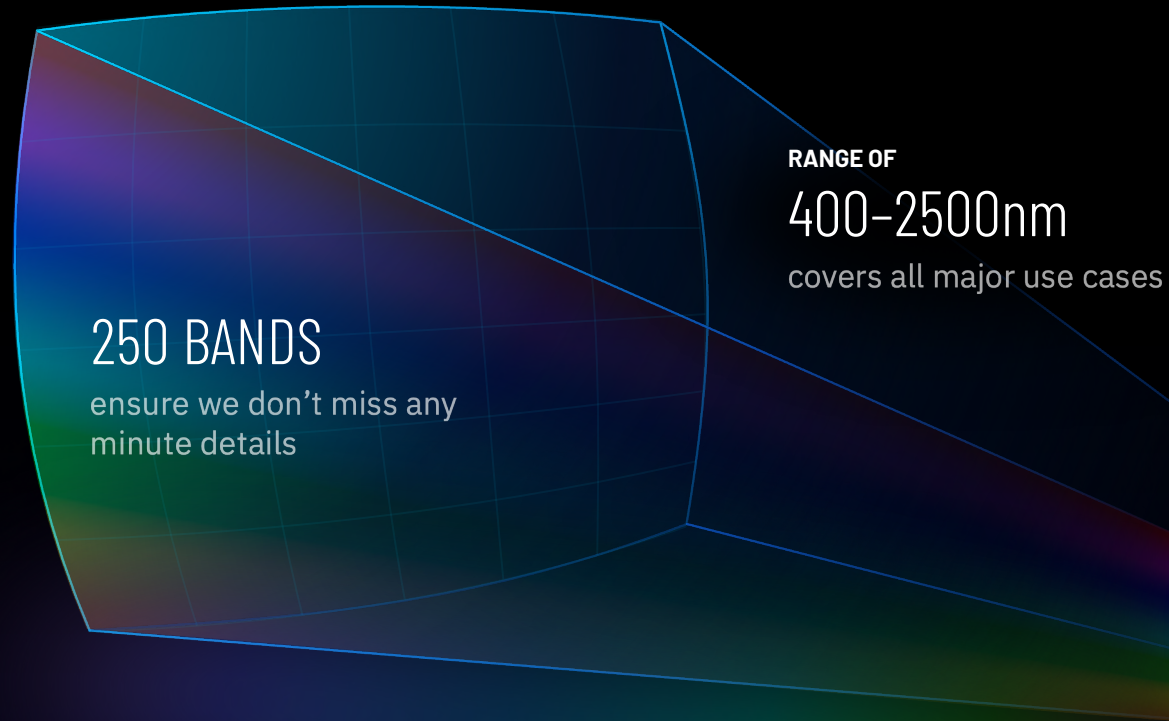
HYPERSPECTRAL DATA

shows clearly how the lake is contaminated with poisonous chemicals, which existing satellite data is not able to detect.

WIDE

40KM SWATH VNIR | 10KM SWATH SWIR

Requires fewer satellites for larger coverage



250 BANDS

ensure we don't miss any
minute details

RANGE OF

400-2500nm

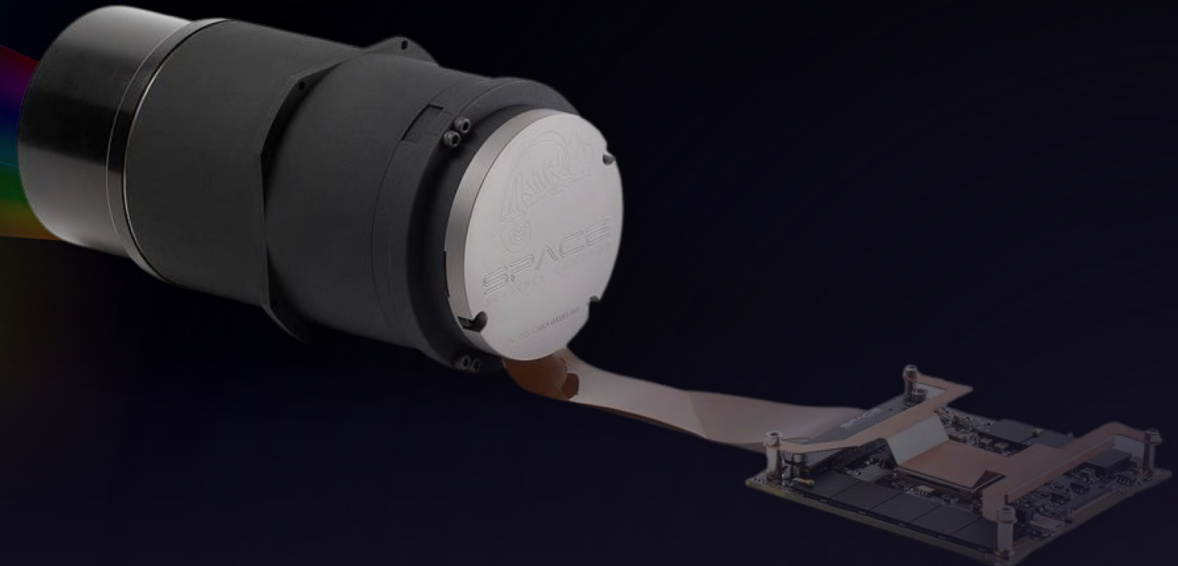
covers all major use cases

HYPERSPPECTRAL CAMERA HIGHLIGHTS

UNPRECEDENTED

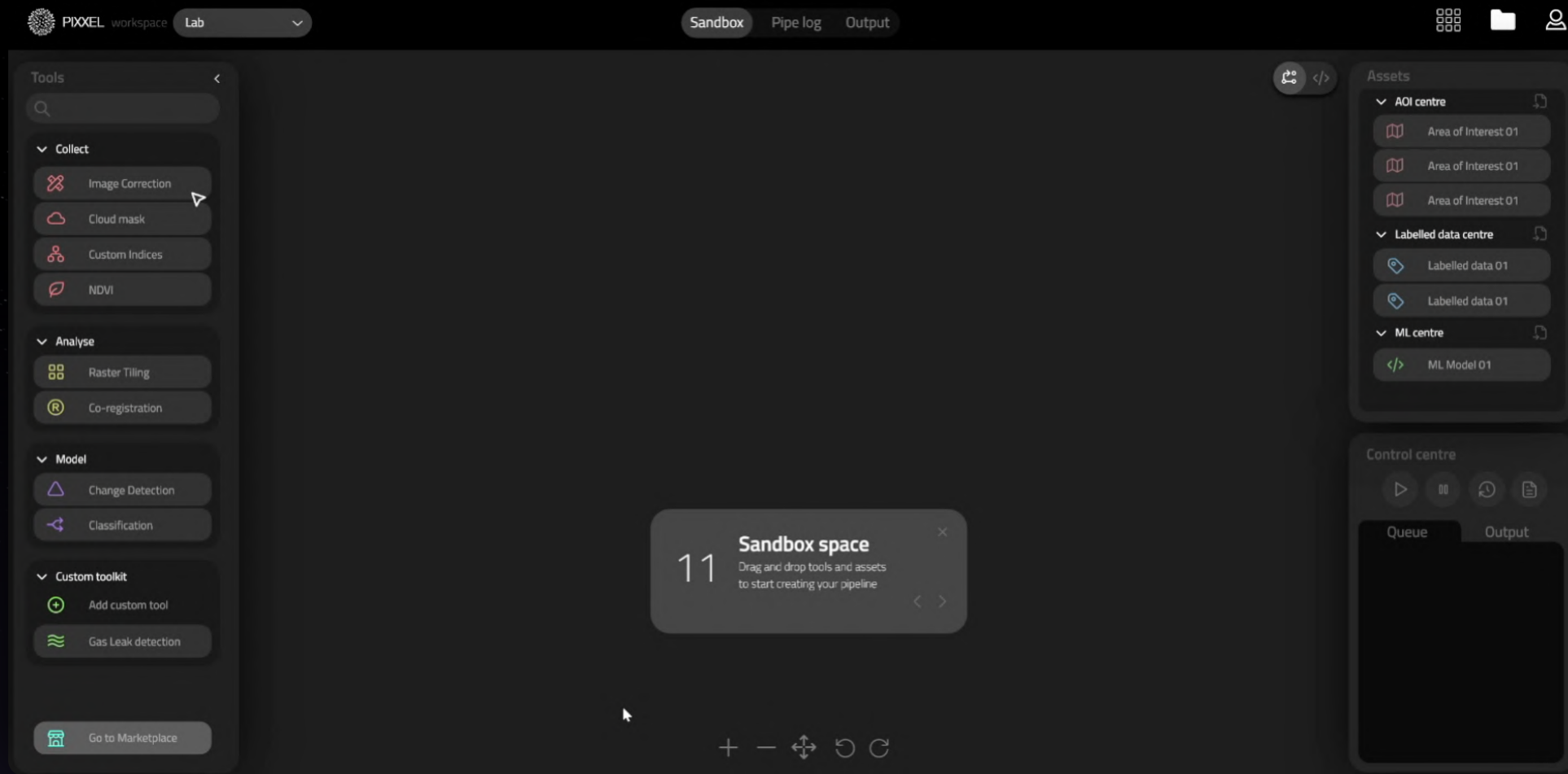
5M RESOLUTION

for hyperspectral



AS EASY AS DRAG AND DROP

NO PRIOR EXPERIENCE WITH SATELLITE DATA REQUIRED





JUNE 21
TD-0 LAUNCHED
(30M VNIR)
X1

APR 22
TD-1 LAUNCHED
(10M VNIR)
X1

SEP 22
TD-2 LAUNCH
(20M VNIR)
X1

Q4 23
LAUNCH 06 5M VNIR
SATELLITES
(DAILY GLOBAL ACCESS)
X6 SWIR

Q1 24
LAUNCH 10M
SWIR TECH DEMO
X1

Q4 2024 – Q1 2025
LAUNCH 12 5M
VNIR AND 06 5M
SWIR SATELLITES
(DAILY REVISIT)
X18 SWIR

FLIGHT PATH

STRONG GLOBAL INVESTORS

\$35M RAISED TO DATE



RYAN JOHNSON



JORDAN NOONE



TOP ADVISORS

WHO HAVE BEEN THERE, DONE THAT



GODARD
Technical Lead



RYAN JOHNSON
Ex President



JORDAN NOONE
Founder





VERTICALLY INTEGRATED MFG & DEV

STRONG IP & TECH DEFENSIBILITY

IN-HOUSE DESIGN & MFG
of all satellites and cameras
All IP owned internally for HW + SW



END-TO-END PROCESSING
built for scale and interoperability
with third party data

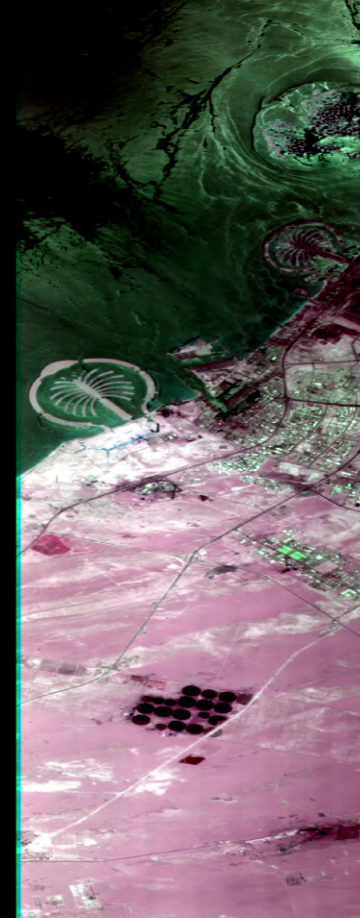
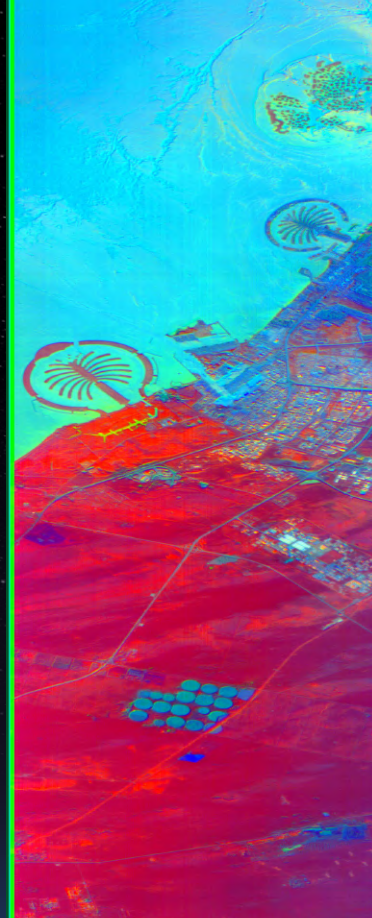
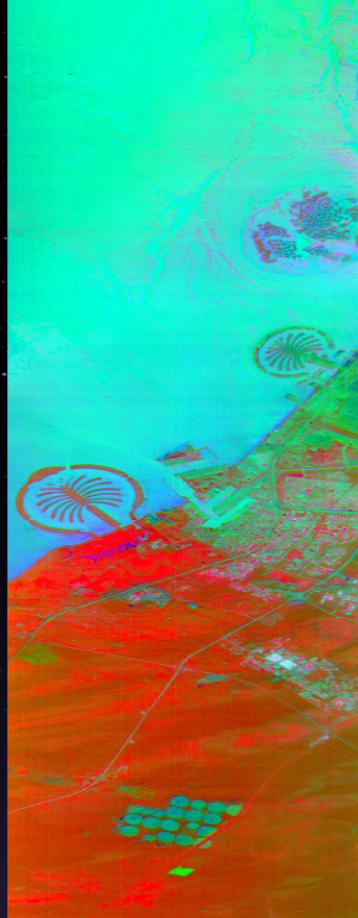
RAPID DOWNLINK
and turnaround within 48 hours
Proprietary and automated imagery processing
pipeline for creating analytics ready data



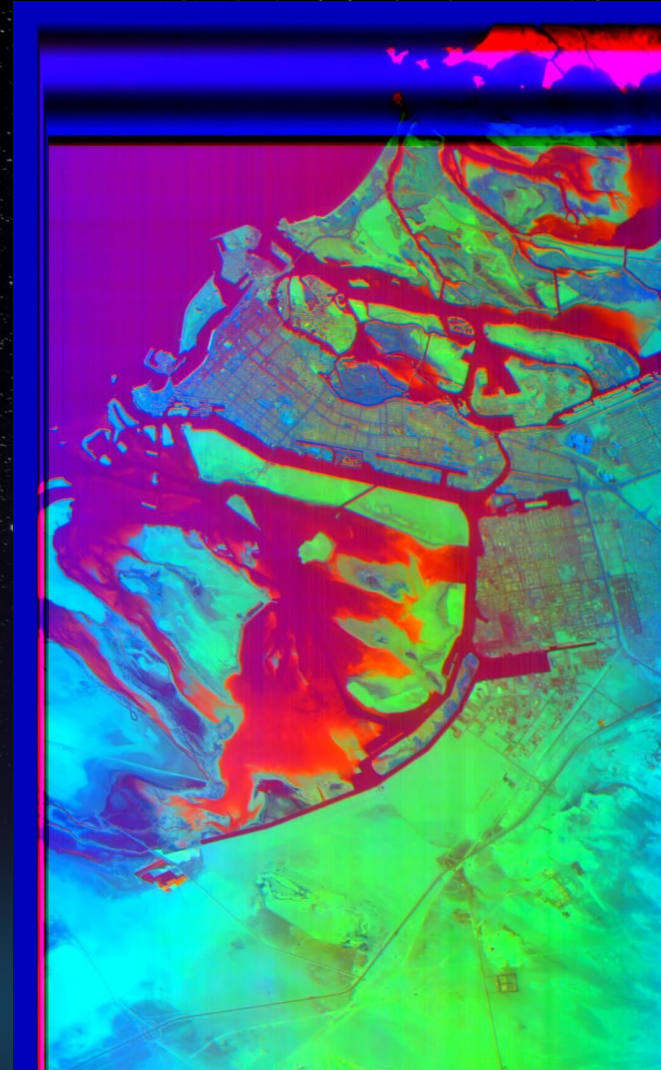
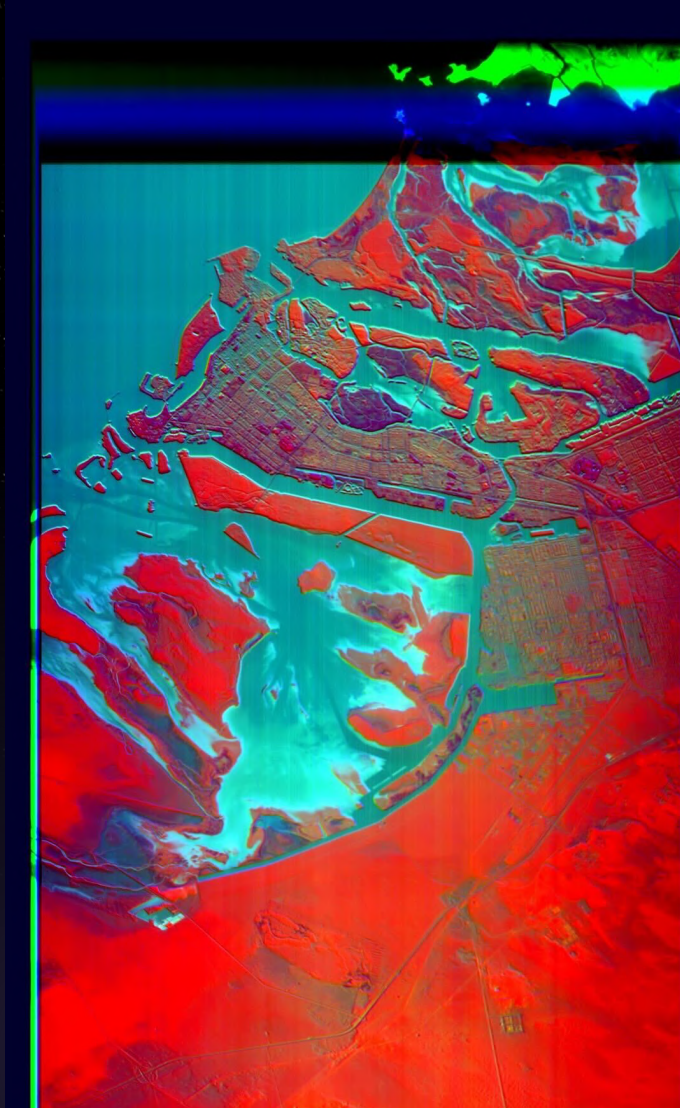
**CRITICAL TECH FUNCTIONS
OWNED IN-HOUSE**

helps us rapidly iterate
& avoid large delays

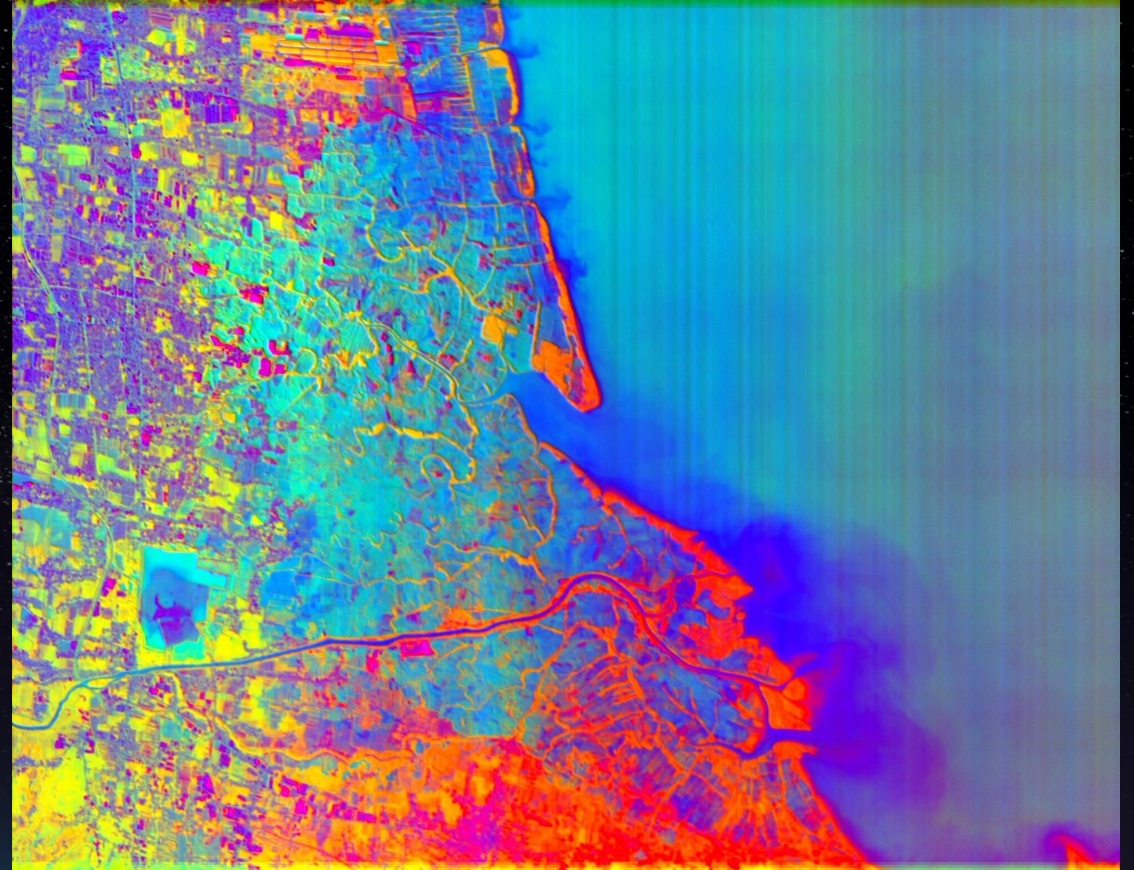
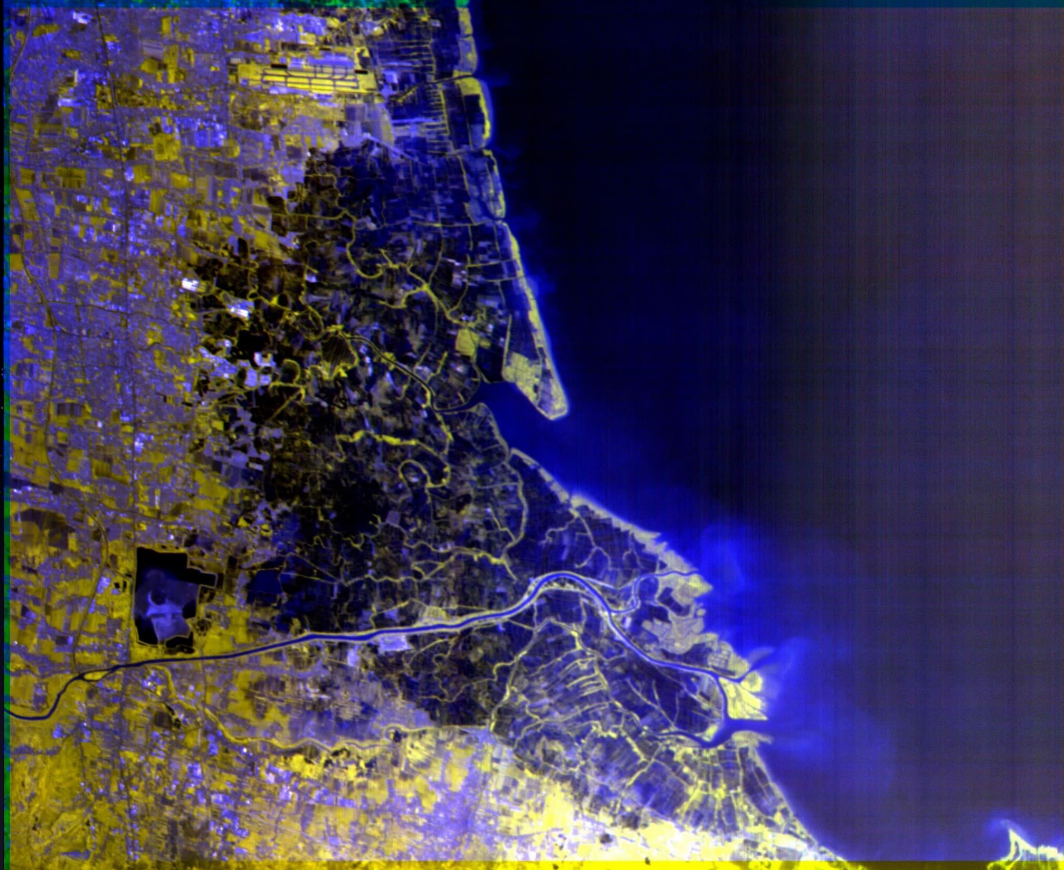
FIRST LIGHT: PREVIEW



FIRST LIGHT: PREVIEW



FIRST LIGHT: PREVIEW



pixxel

Making satellite imagery actionable
by seeing the unseen

contact@pixxel.space



3260 Hillview Ave.

PALO ALTO, CA 94304, USA

722, CMH Road

INDIRANAGAR, BANGALORE, INDIA - 560 038