

# Site Selection for New Space

2023/09/28

**Cody Anderson, ECCOE PM – WGCV Vice-chair**

**USGS**

[chanderson@usgs.gov](mailto:chanderson@usgs.gov)

Earth Resources Observation and Science (EROS) Center, Sioux Falls, SD 57198, USA.

U.S. Department of the Interior  
U.S. Geological Survey

# Outline

---

- ◆ **Background**
- ◆ **Radiometric Sites**
- ◆ **Geometric Sites**
- ◆ **Spatial Sites**

# Background

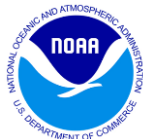
- ◆ **WGCV-52-ACT-18** - IVOS Chair to include the 'New Space' match-up database topic on the agenda for the next IVOS Subgroup meeting. - Next IVOS meeting
- ◆ **WGCV-52-ACT-19** - WGCV Chair to prepare a presentation for VH-RODA on the 'New Space' match-up database. Presentation + concrete, real examples of what it will look like. – September (This will be done after IVOS meeting in September)
- ◆ **WGCV-52-ACT-20** - Cody Anderson to make a start and connect with IVOS Chair - consolidate a list of approx. 5-10 locations for a radiometry match-up database. In Progress (Topic for the next IVOS (Sept 25-29))
- ◆ **WGCV-52-ACT-21** - WGCV Secretariat to send a poll for an end-October teleconference on the possibility of a GCP match-up database in addition to the existing radiometry focused match-up database proposal. The call will take stock of: potential participation, summarise work done to date, consider a survey of what exists with respect to GCP data sources and availability for geometry aspect of match up database. Consider Ling ling connection. – (Target first week of Oct?)

# Background (Cont.)

## ◆ JACIE/VH-RODA Actions

- ◆ Database of high-res Ground Control Points (GCPs) and Digital Elevation Models (DEMs)
- ◆ Common Cal/Val Evaluation Sites
- ◆ Common data pool for commercial imagery over evaluation sites

## ◆ JACIE Partner Agencies



## VH-RODA



# Radiometric Sites (Instrumented)

---



Baotau Target, China



Baotau Sandy, China



Dunhuang, China



Gobabeb, Namibia



La Crau, France



Railroad Valley Playa



Lake Tahoe  
(Thermal)

# Radiometric Sites (PICS)

---



Libya 4



Libya 1



Algeria 3



Libya - Volcanic Site (Dark)



Amazon Forest (Dark)

# Radiometric Sites

Site Name	Center Latitude	Center Longitude
<b>Instrumented Sites</b>		
Baotau Target, China	+40.85	+109.63
Baotau Sandy, China	+40.87	+109.62
Dunhuang, China	+40.13	+94.34
Gobabeb, Namibia	-23.60	+15.12
La Crau, France	+43.56	+4.86
Railroad Valley Playa	+38.50	-115.69
Lake Tahoe (Thermal)	+39.10	-120.03
<b>Pseudo-Invariant Calibration Sites (PICS)</b>		
Libya 4	+28.55	+23.39
Libya 1	+24.42	+13.35
Algeria 3	+30.32	+7.66
Libya - Volcanic Site (Dark)	+24.83	+17.82
Amazon Forest (Dark)	-2.13	-63.63

# Geometric Sites

---



Sioux Falls, SD, USA



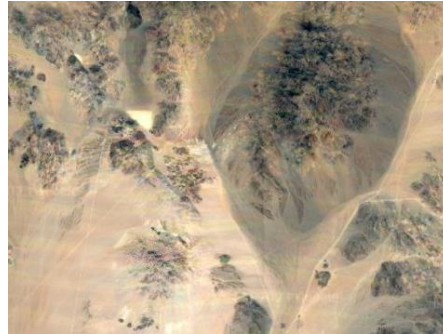
Pueblo, CO, USA



Southern California N, USA



Southern California S, USA



Barstow, CA, USA



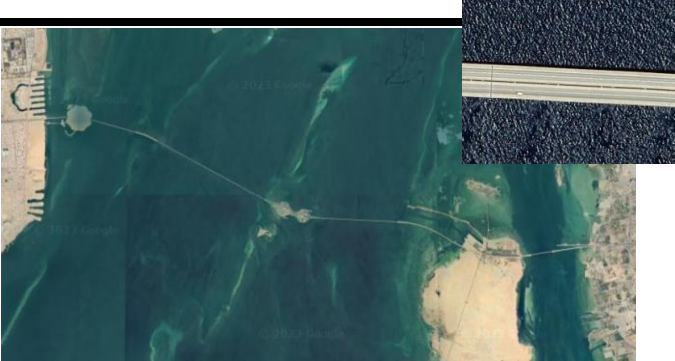
Edwards, CA, USA



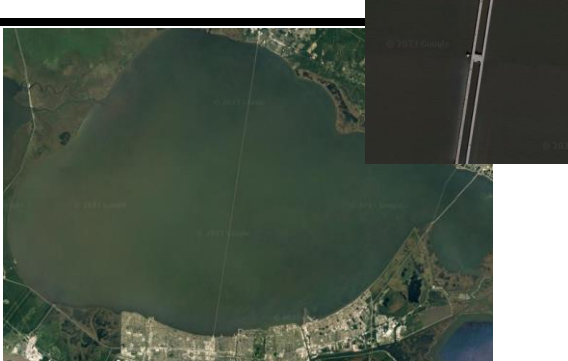
# Geometric Sites

Site Name	Center Latitude	Center Longitude
Sioux Falls, SD, USA	+43.56	-96.75
Pueblo, CO, USA	+38.28	-104.61
Southern California N, USA	+34.61	-115.25
Southern California S, USA	+33.18	-115.65
Barstow, CA, USA	+34.61	-116.80
Edwards, CA, USA	+34.61	-118.34

# Spatial Sites



King Fahd Causeway



Lake Pontchartrain Causeway



Baotou Target, China



ISRO NRSC India

# Spatial Sites

Site Name	Center Latitude	Center Longitude
<b>Medium Resolution Sensor</b>		
King Fahd Causeway	+26.20	+50.34
Lake Pontchartrain Causeway	+30.21	-90.12
<b>High Resolution Sensor</b>		
Baotou Target, China	+40.85	+109.63
ISRO NRSC India	+17.03	+78.18