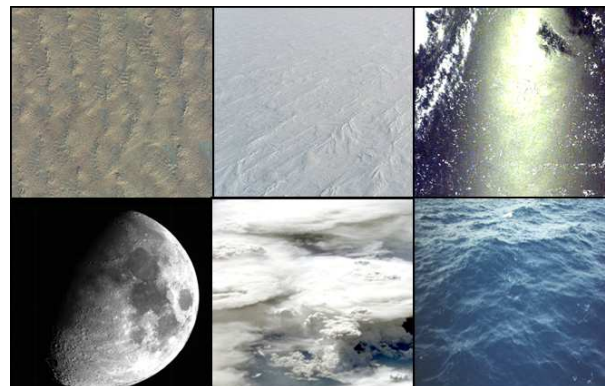




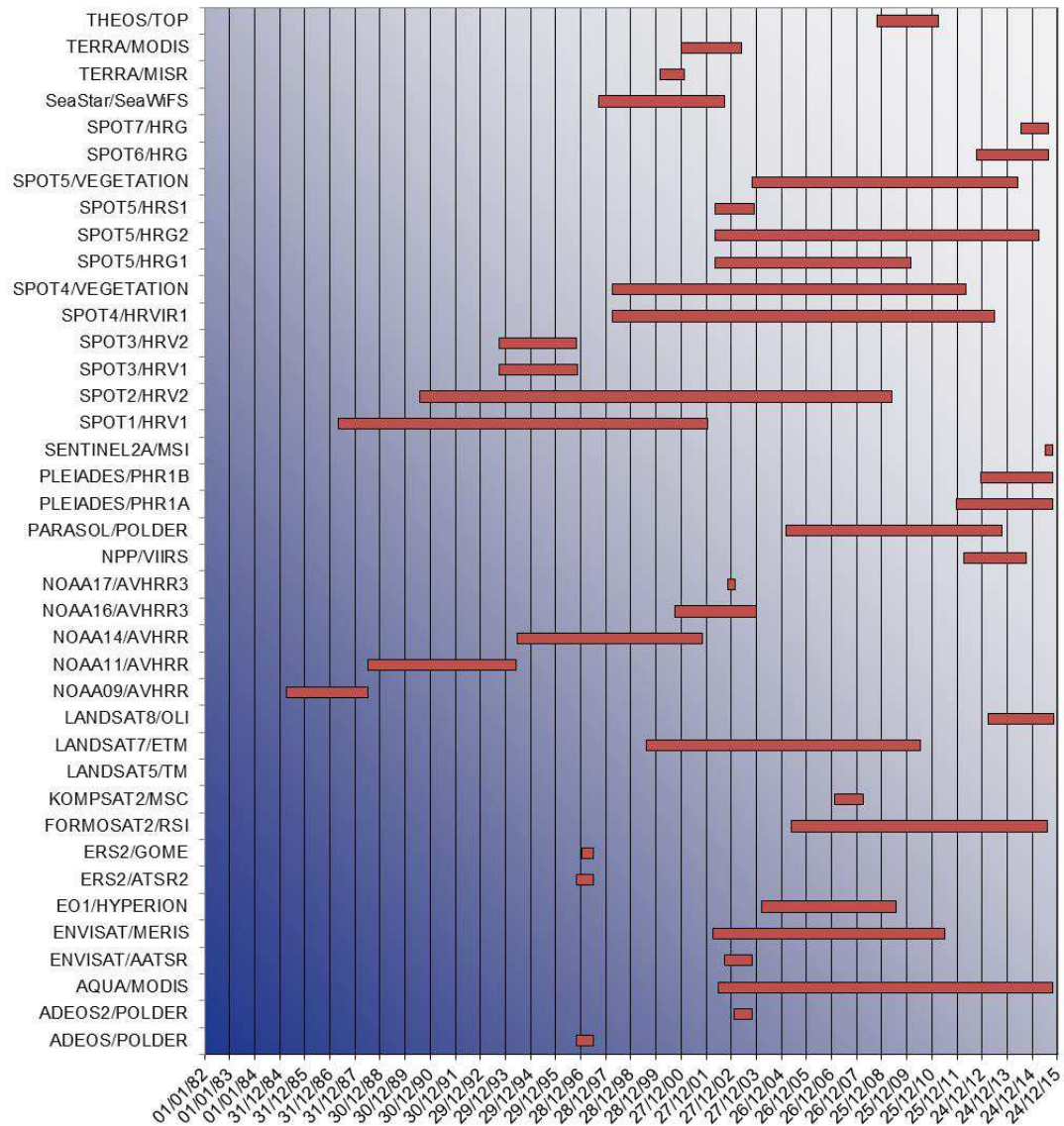
SADE-MUSCLE status

Aimé Meygret for SI/MO and ME/EI



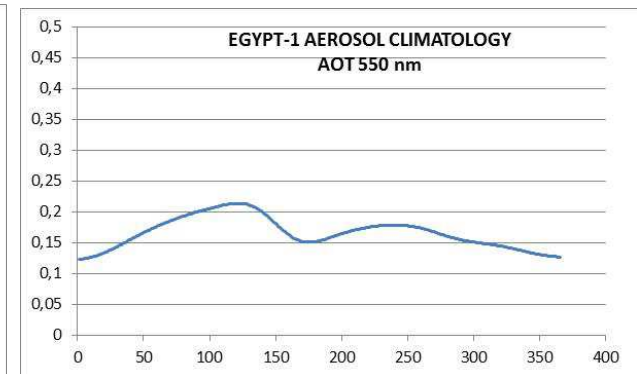
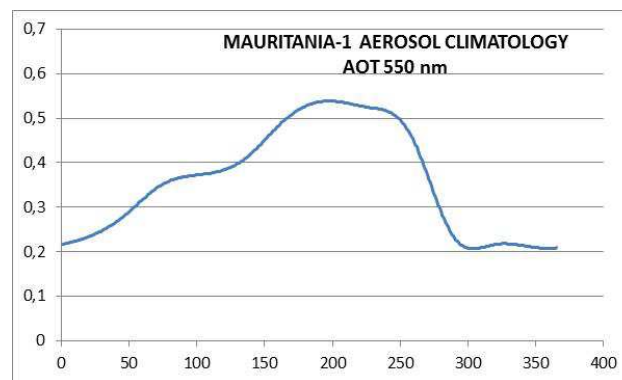
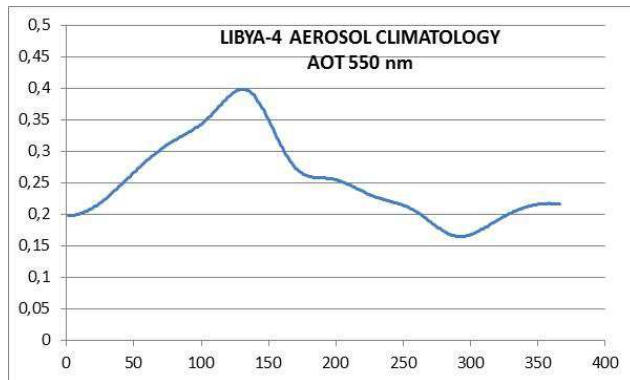
Deserts (PICS): SADE operational data base content

- 39 sensors
- From 1987 to 2015...
- More than 710000 multi-spectral measurements



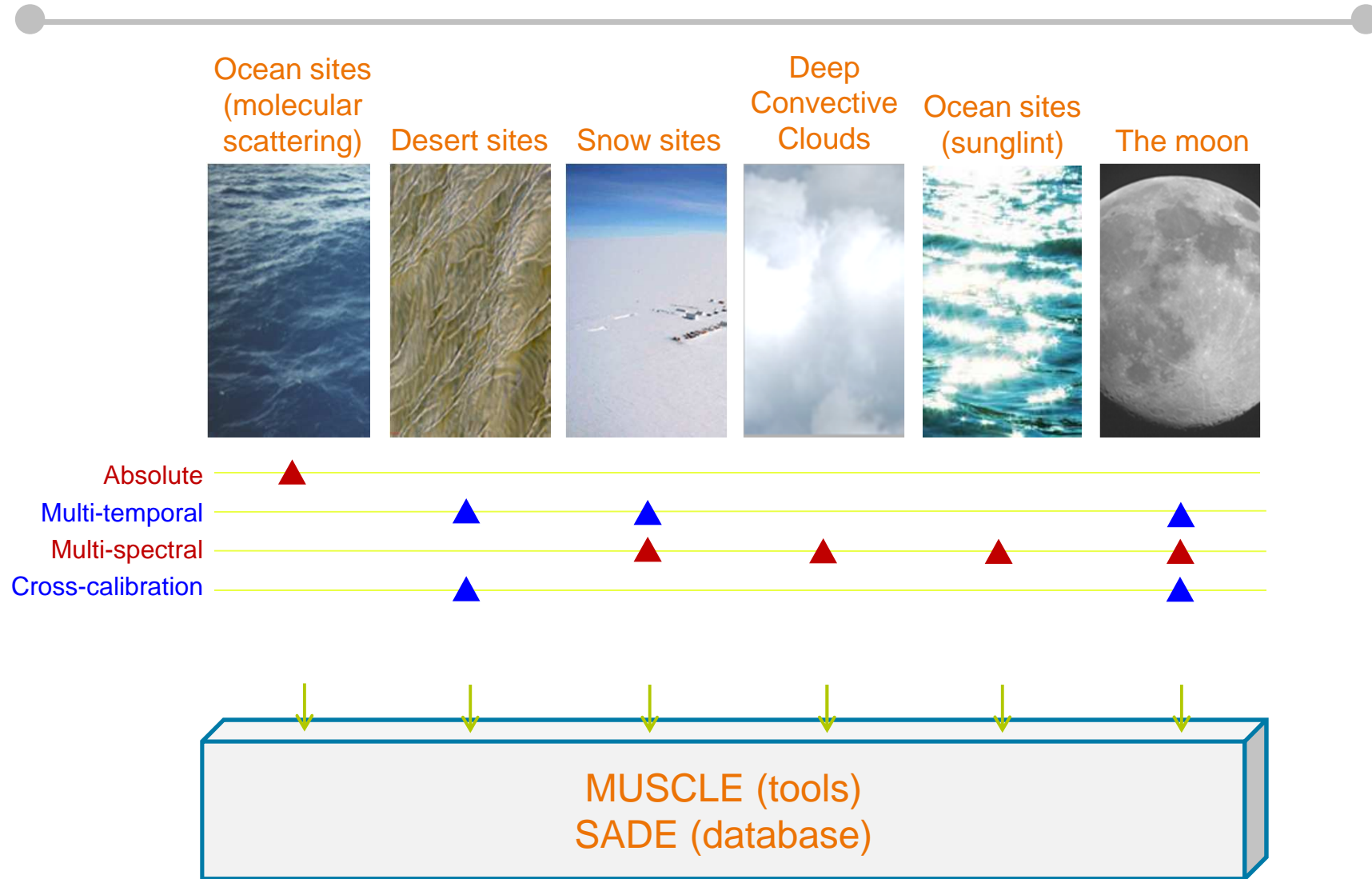
MUSCLE TOOLS EVOLUTIONS FOR PICS

- **Aerosol climatology for desert sites**
 - **Based on MODIS-A (2002-2013) and MODIS-T (2000-2007) aerosols products (MODIS Deep Blue)**
 - **climatology generated**
 - **cross-calibration impact assessment on going**



- **Radiative transfer code: use of 6S LUT instead of SMAC: validated, LUT generation on going (sensor dependant)**
- **BOA reflectances hyperspectral interpolation (validation on-going)**

SADE operational data base



- More than 50 sites
- 62 402 000 measurements...

Future work

- **SADE/MUSCLE developed in 2000 (ORACLE data base + Solaris 10 /SUN)**
- **Limitations:**
 - **Tools: Execution environment obsolete**
 - **Data base: Tables structure + performance limitations due to the Number of data**
 - **The software architecture no more compatible with actual evolution needs : moon, stars or polarization calibration**
 - **Important maintenance costs**
- **Decision to develop a new system (Data Base + tools) in 2016**